



**The New Hampshire
Child Care
Advisory Council**

Relief for Child Care Small Businesses

May 1, 2020

Presenters: Scott Spradling, Board President, Early Learning NH
scott@spradlinggroup.com

Jackie Cowell, Executive Director, Early Learning NH
jcowell@earlylearningnh.org ▪ (603) 226-7900 ▪ earlylearningnh.org

Thank you for all you are doing to help our state recover from this unprecedented pandemic. Your efforts will save businesses and make it possible for Granite State families to go back to work.

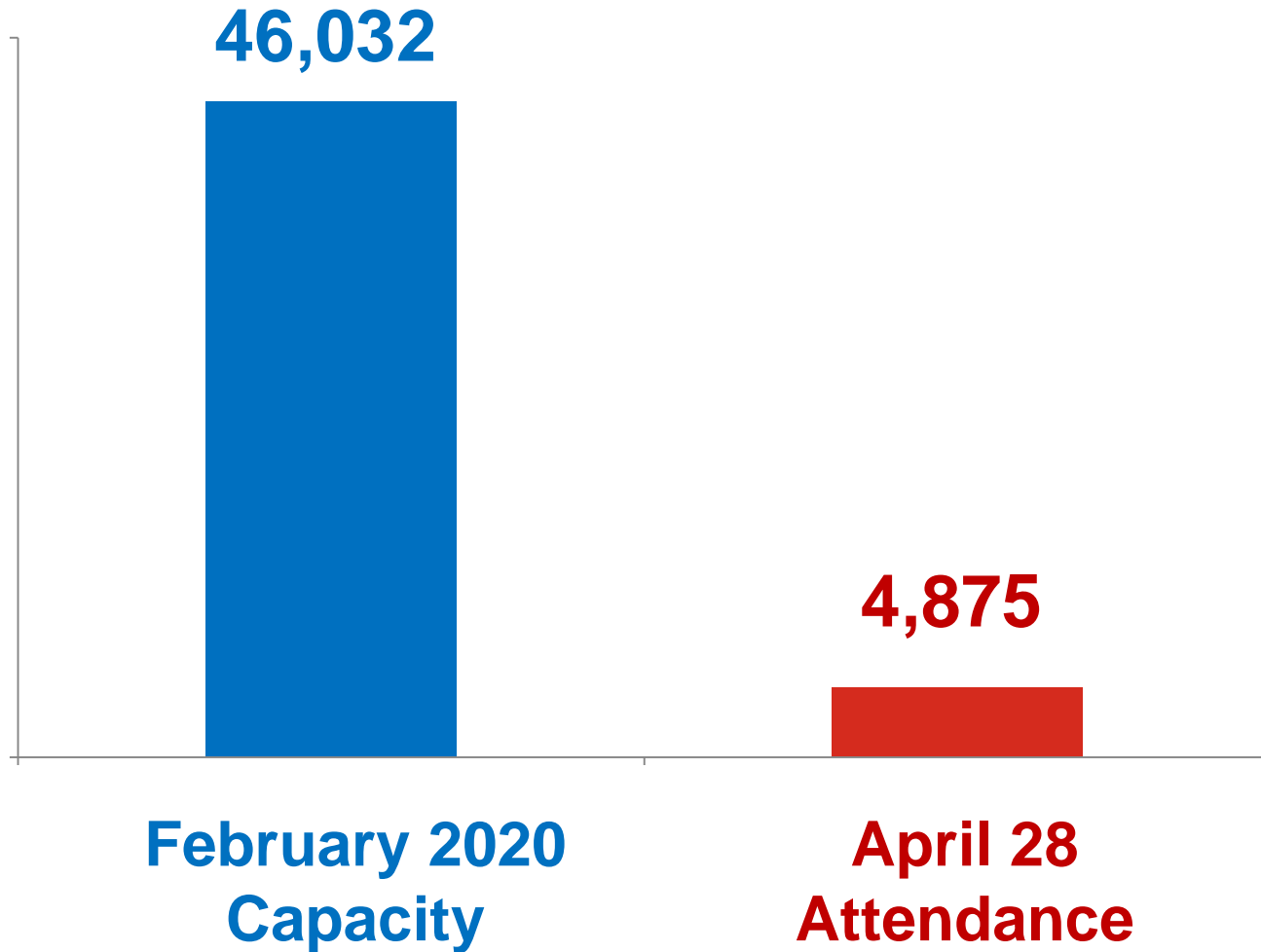
In the next few minutes, we will explain the impact of COVID-19 on our state's child care sector and propose a relief response that will allow these essential small businesses to open/re-open and stay open.

The fact is that the only way to re-open the economy is to ensure that parents have access to child care. No matter how much support is targeted at every important industry in our state – none of it will matter if workers can't return to work.

We have to get this part right.



New Hampshire Child Care



The Economic Impact of NH's Child Care Industry

The child care industry is comprised of many small businesses. When the industry is looked at as a whole, as was last done in 2009 by the NH Department of Employment Security, this is what it looked like:

- New Hampshire's child care industry will allow working parents to generate \$4.4 billion of state Gross Domestic Product (GDP) in fixed 2000 dollars.
- The child care industry will contribute approximately \$2.5 billion to Personal Income in New Hampshire each year.
- **The economic impacts of the child care industry, which includes early childhood education, are similar to the economic impacts of travel and tourism.** For example:
 - The child care industry accounts for 7.1 percent of state GDP. Direct spending from travel and tourism in New Hampshire accounts for 7.6 percent of state GDP.*

* Goss, L.E. New Hampshire Fiscal Year 2006 Tourism Satellite Account Prepared for the New Hampshire Division of Travel and Tourism Development. Plymouth State University, Institute for New Hampshire Studies. June 2007.

<https://www.nhes.nh.gov/elmi/products/documents/childcare.pdf>

Child care is not only a workforce support, it also provides:

- A safe and nurturing environment that helps build life skills for babies through school-agers
- Summer learning and before and afterschool programs
- Continued distance learning opportunities
- Social-emotional supports to children and their families
- A reliable way to access healthy food for kids and families

Support for Emergency Child Care

- DHHS-designated Emergency Child Care Programs (ECCPs) as of April 13th were eligible to apply for a \$5.00 per staff per hour pay differential. [This is paid on top of current pay.]
- Currently, all programs that serve NH Child Care Scholarship income-eligible families are able to bill for these children, and the parent cost-shares is covered. [90% of parents who use child care and pay tuition are not on this scholarship.]
- Open ECCPs are eligible to receive supplies including bleach, thermometers, masks, gloves, wipes, hand sanitizer, etc.
- The Emergency Child Care Collaborative
- \$6.95M from the CARES Act to DHHS for child care

Request

Set up a fund for Child Care Relief Grants to cover business losses due to COVID-19 so child care small businesses can both open/re-open and stay open to support the New Hampshire workforce, children, families and communities.

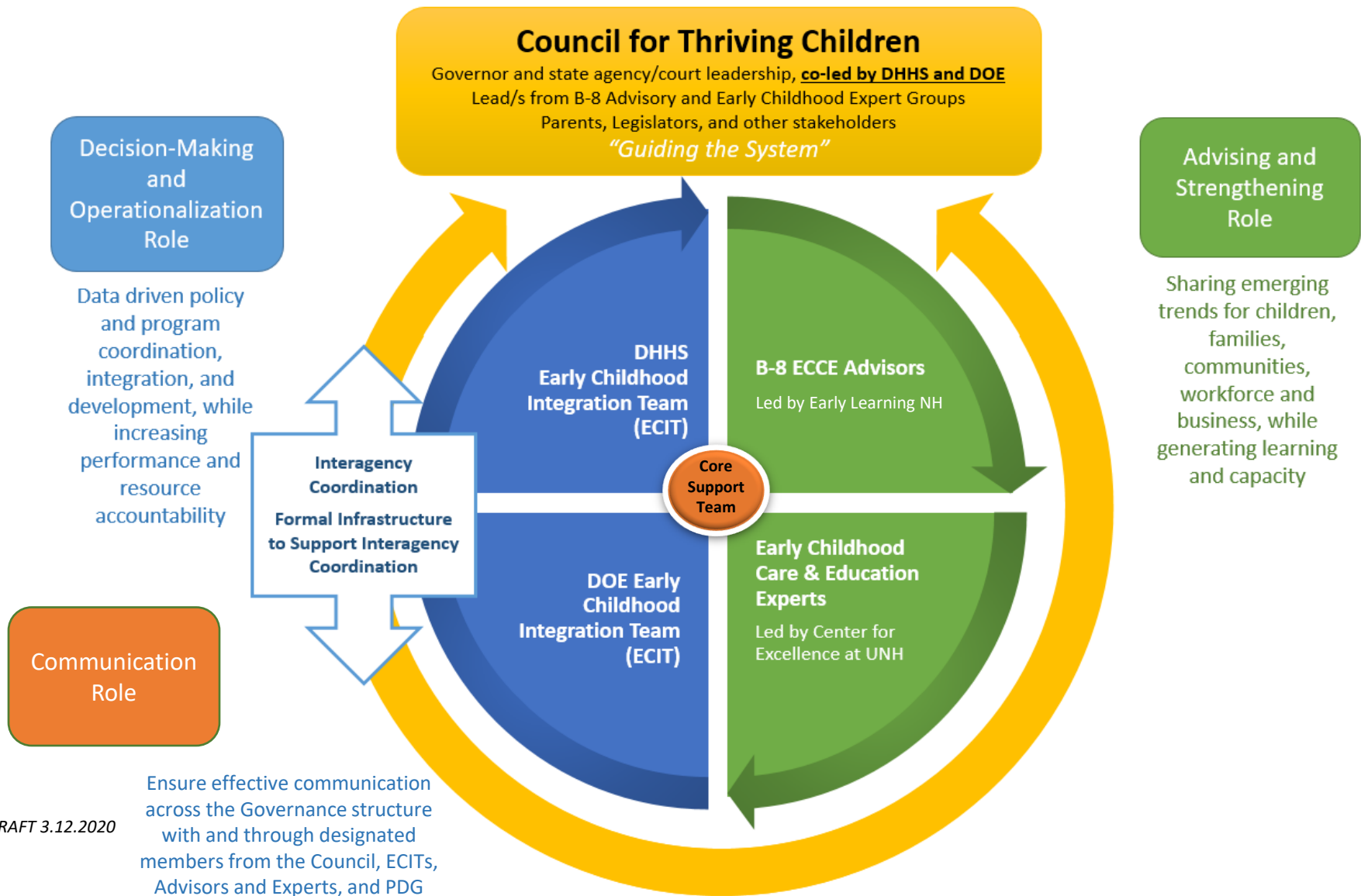
Institute a grant process with robust accountability of proof of need – accounting for receipt of other COVID-19 specific aid, such as SBA loans, ECCP funding, etc. Child care small businesses can apply specifically for the amount of relief needed to be able to: 1) stay in business while operating at safe, reduced levels and 2) be in place to provide services ASAP for the New Hampshire workforce in the short and longer term.

	# Eligible to Apply	Child Care Relief Grant Estimate Needed per month for 6+ months	Total
Family-based Child Care	132+	\$1,000 - \$3,000+ losses/month (assumption: average=\$1,500)	\$ 1,188,000
Center-based Child Care	656+	\$7,500 - \$30,000+ losses/month (assumption: average=\$12,000)	\$ 47,232,000
Total	788+		\$ 48,420,000

Allowable Uses for Child Care Relief Grants Include:

- Fixed costs like rent or mortgage, heat, utilities, property taxes, employee benefits, etc. that aren't covered when revenue is down due to COVID-19
- Deep cleanings of facilities and cleaning supplies as needed
- Extra liability coverage and other required insurances
- Staff re-hiring, recruitment, retention, and training costs
- Adaptations of facilities to accommodate diminished group sizes
- Financial stability and business consultations and other capacity-building supports
- COVID-19 testing and health screenings for staff and students
- Health and mental health consultations

Align with the Council for Thriving Children



Child care is a critical part of the economy's supply chain - if we don't make sure it is available throughout the state, it's going to prevent workers from getting back to work, with serious implications for the state's economic recovery and future prosperity.



It is time to stand the child care industry back up to be ready for when NH's workers (and children, school-agers and communities) need it.



Before a coming storm, EverSource stations their trucks ahead of time, ready to go. We must do the same and with the same urgency with child care so New Hampshire's workforce can be on the job as we recover from the storm.



Thank You for your consideration